

CONSTANZE

FOR SALE



PRICE:

£29,950

50FT // 2002

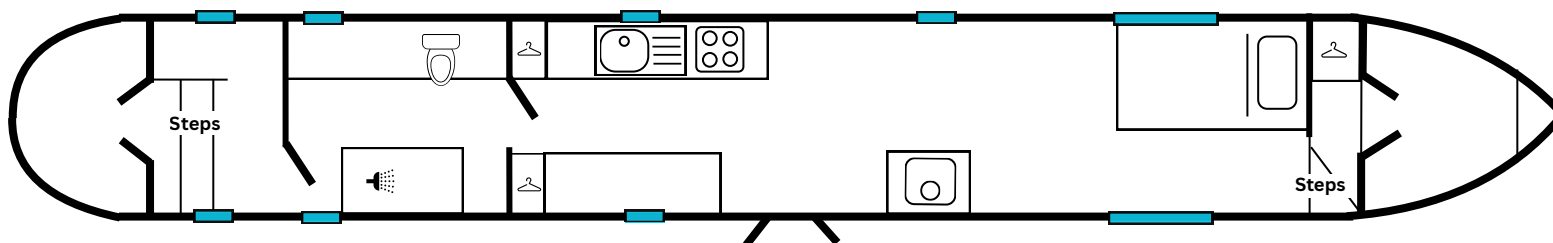
1 Berth
Trad Stern

SUMMARY

Constanze is a lovely and affordable 50-foot narrowboat from 'Floating Homes'. She has an open layout with plenty of potential to put your own stamp on and make her your perfect home on the water.

Powered by a Barrus Shire 35 engine with a PRM gearbox, Constanze also features a multifuel Morso stove to keep you warm along with a battery charger, inverter, and two 150W solar panels for easy off-grid living.

The cabin sides and roof are well maintained, and she comes complete with all the essential cruising gear. Constanze is a great opportunity for anyone looking for an affordable liveaboard or a comfortable cruiser



THE ASHBY CANAL CENTRE, WILLOW PARK MARINA, STOKE GOLDING,
NUNEATON, WARWICKSHIRE, CV13 6EU

CONTACT US FOR A VIEWING

01455 212636

boatsales@ashbycanalcentre.co.uk

CONSTANZE SPECIFICATION

GENERAL

- YEAR BUILT: **2002**
- BUILDER: **FLOATING HOMES**
- STYLE: **TRAD STERN**
- BERTH: **1**
- LENGTH: **50'**
- HULL THICKNESS: **10/6/4**
- HEADROOM: **194cm in Cabin**
182cm in Bathroom
- ENGINE: **Barrus Shire 35**
- GEARBOX: **PRM 120**
- ALTERNATOR: **SINGLE**
- RCD: **NO**
- **New Boat Safety (Oct 2025)**

ELECTRICAL

- 12V Starter Battery
- 4 x Leisure Batteries
- Sterling Charger
- Carrybatt 3KW Inverter
- Shoreline Socket
- 2 x 150W Solar Panel
- 240V Sockets
- 12V Sockets
- Overhead Lighting

WATER/GAS

- Integral Steel Tank
- Calorifier
- Water Pump
- 2 x 13Kg Gas Bottles

LIVING SPACE

- Open Living Space
- Single Bed
- Multifuel Stove
- Laminate Flooring
- Side doors

GALLEY

- Gas Oven and Grill
- Wannyton Chest Fridge
- Solid Oak Worktop
- Cupboards Under
- Stainless Steel Sink

BATHROOM

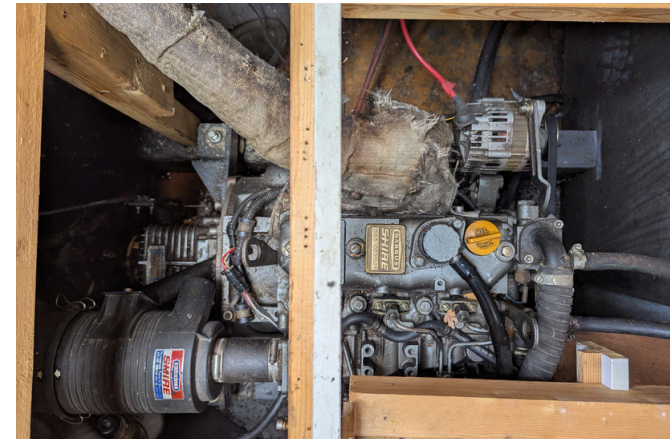
- Pump Out Toilet
- Walk In shower recently fitted
- Vinyl Flooring
- Headroom 182cm

HEATING

- Morso Multifuel Stove
- Spray Foam Insulation

EXTERNAL

- Front Cratch and Cover



These details are given in good faith but no guarantee is given or implied. Purchasers must satisfy themselves as to the condition and suitability of this vessel. We recommend that a qualified surveyor is employed. The Ashby Canal Centre are agents for this boat on behalf of the owner



