

AQUA LIFE

FOR SALE



PRICE:
£84,500

50FT // 2019

2 +2 Berth
Semi Cruiser Stern

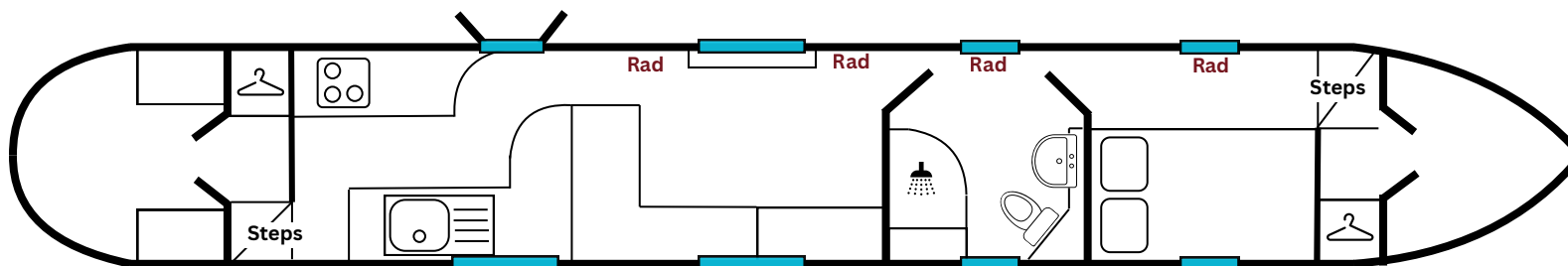
SUMMARY

Aqua Life is a beautifully crafted luxury boat from the renowned Aqua Narrowboats, known for their exceptional build quality and attention to detail.

Her well designed interior offers a bright and airy atmosphere. With the spacious galley and versatile living area making Aqua Life perfectly suited for both weekend getaways and extended cruising adventures.

She is equipped with a Webasto diesel heating system, a Victron Combi inverter/charger, and newly installed deck boards – all contributing to a reliable and enjoyable onboard experience.

Aqua Life presents a superb opportunity to explore the inland waterways in comfort and style.



THE ASHBY CANAL CENTRE, WILLOW PARK MARINA, STOKE GOLDING,
NUNEATON, WARWICKSHIRE, CV13 6EU

CONTACT US FOR A VIEWING

01455 212636

boatsales@ashbycanalcentre.co.uk

AQUA LIFE SPECIFICATION

GENERAL

- YEAR BUILT: **2019**
- SHELL: **COLECRAFT**
- FIT OUT: **AQUA NARROWBOATS**
- STYLE: **SEMI CRUISER STERN**
- BERTH: **2+2**
- LENGTH: **50'**
- HEADROOM: **198cm in Centre**
- ENGINE: **BETA 38 w HOSPITAL SILENCER**
- GEARBOX: **PRM 150 D2**
- Boat Safety: **EXPIRES 2027**
- Last Blacked: **FEBRUARY 2025**
- RCD: **YES**

LIVING

- L Shape Long Sofa
- Converts to Second Double
- Storage Under Seating
- Dining Table
- TV Unit with Cupboards & Shelves
- Carpet
- Side Swan Hatch

BEDROOM

- Double Bed with pull out extension
- Reading Lights
- 2 Cupboards
- Extra Storage Under Steps
- Laminate Flooring
- Flat Screen TV

GALLEY

- Thetford 3 Hob
- Thetford Midi Prima Oven
- 240V LEC Fridge
- Beko Microwave
- Stainless Steel Sink and Drainer
- Sylish Quartz Worktop with Cupboards Under
- Laminate Flooring

BATHROOM

- Jabsco Pump Out Toilet
- Ceramic Sink
- Cupboard Under Sink
- Spacious shower with cupboard to side
- Large Mirror
- Laminate Flooring

EXTERNAL

- Well Maintained paintwork
- Gunwales Repainted June 2026
- New Deckboards fitted June 2026
- Spacious Front and Rear Decks
- Well maintained/clean Engine Bay

HEATING

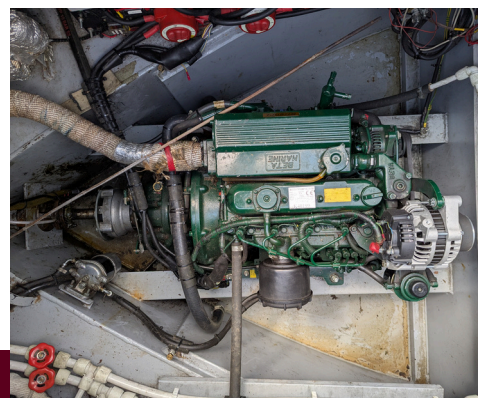
- Webasto Diesel Heating
- 4 Radiators
- Spray Foam Insulation

WATER/GAS

- 400 Lt Stainless Steel Water Tank
- Twin Coil Calorifier w/ Immersion
- Whale Pressure Pump
- Accumulator
- 2 x 13Kg Gas Bottles (rear)

ELECTRICAL

- 12V Starter Battery
- 3 x 115Ah Leisure Batteries
- 12/3000/120 Victron Inverter Charger
- Victron Battery Monitor
- Shoreline Socket
- 240V Sockets Throughout
- Overhead LED Lighting
- Automatic Bilge Pump
- Galvanic Isolator



These details are given in good faith but no guarantee is given or implied. Purchasers must satisfy themselves as to the condition and suitability of this vessel. We recommend that a qualified surveyor is employed. The Ashby Canal Centre are agents for this boat on behalf of the owner



