

ADVENTURER

FOR SALE



PRICE:

£49,995

50FT // 2005

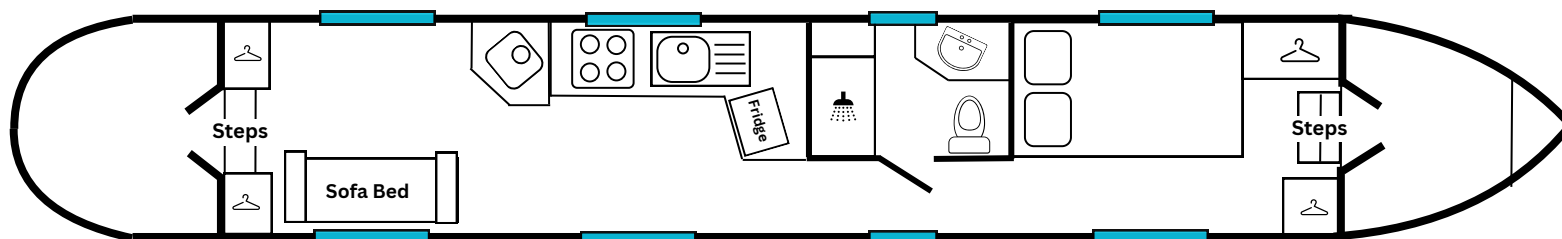
2 + 2 Berth / Cruiser Stern
Reverse Layout

SUMMARY

Adventurer is a beautifully presented 50' narrowboat built by SW Durham Steelcraft, offering both charm and practicality. The cabin has been recently repainted in 2025, and the boat features a well-thought-out reverse layout that maximizes space and usability, with plenty of built-in storage throughout.

Powered by a reliable Beta 35 engine, and equipped with a Victron inverter, multifuel stove with back boiler, and a cassette toilet, Adventurer is well-suited for comfortable year-round living.

The boat has recently passed an excellent hull survey carried out by **National Marine Surveying**, and will include a New BSS Certificate



THE ASHBY CANAL CENTRE, WILLOW PARK MARINA, STOKE GOLDING,
NUNEATON, WARWICKSHIRE, CV13 6EU

CONTACT US FOR A VIEWING

01455 212636

boatsales@ashbycanalcentre.co.uk

AQUA LIFE SPECIFICATION

GENERAL

- YEAR BUILT: **2005**
- SHELL: **SOUTH WEST DURHAM**
- STYLE: **CRUISER STERN**
- LAYOUT: **REVERSE**
- BERTH: **2+2**
- LENGTH: **50'**
- HEADROOM: **198cm in Centre**
- ENGINE: **BETA 35**
- GEARBOX: **PRM 150**
- ALTERNATOR: **TWIN**
- BOAT SAFETY: **NEW FOR OWNER**
- RCD: **YES**

LIVING

- Long Sofa Bed
- Twin Cupboards to Rear
- Carpet Flooring
- Multifuel Stove

GALLEY

- Spinflo Gas Cooker
- 12V Fridge
- Microwave
- Stainless Steel Sink
- Laminate Worktops
- Excellent Storage
- Freestanding Fold Down table & Stools

BEDROOM

- Double Bed with storage under
- Large Wardrobe
- Corner Cupboard
- Overhead Cupboard and lighting

BATHROOM

- Thetford Cassette Toilet
- Shower
- Vanity Basin

EXTERNAL

- Cabin Sides Repainted Jan 2025
- Front and Rear Covers
- Well maintained Engine Bay

HEATING

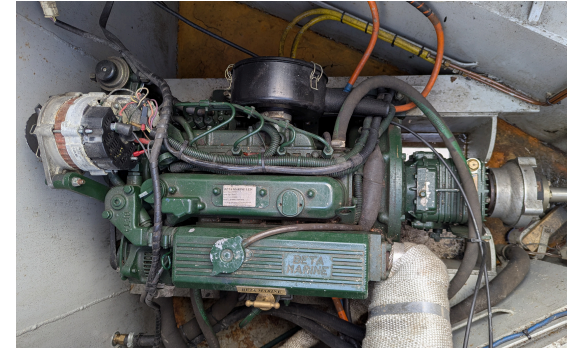
- Multifuel Stove with Back Boiler
- Radiators
- Spray Foam Insulation

WATER/GAS

- Stainless Steel Water Tank
- Twin Coil Calorifier w/ Immersion
- Pressure Pump
- 2 x 13Kg Gas Bottles

ELECTRICAL

- 12V Starter Battery
- 3 x 110Ah Leisure Batteries
- 12/1600W Victron Inverter Charger
- Battery Monitor
- Shoreline Socket
- 240V Sockets Throughout
- Overhead LED Lighting
- Bilge Pump
- Galvanic Isolator



These details are given in good faith but no guarantee is given or implied. Purchasers must satisfy themselves as to the condition and suitability of this vessel. We recommend that a qualified surveyor is employed. The Ashby Canal Centre are agents for this boat on behalf of the owner



