

# MALVERN

## FOR SALE



PRICE:

# £29,995

70FT // 1928

Cabin Conversion 1985

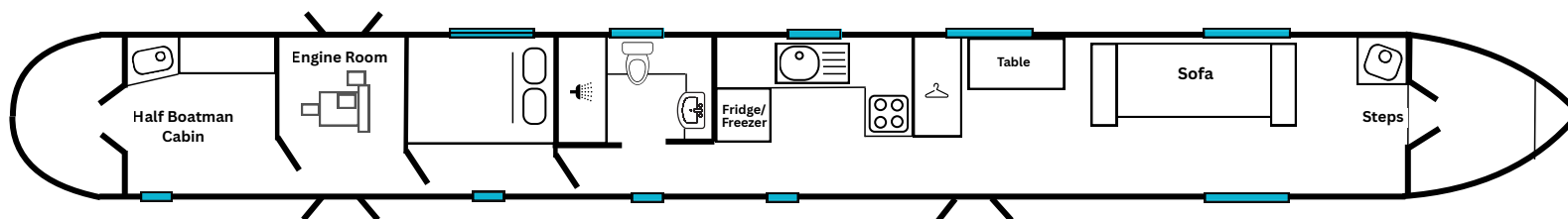
**Fellows Morton & Clayton  
Historic Narrowboat**

### SUMMARY

A rare chance to own 'Malvern', an original 1928 **Fellows Morton & Clayton composite butty** built by **Harris Brothers**, Netherton. She is a genuine surviving working boat with strong historical provenance and classic iron-composite construction.

**Converted in 1985**, Malvern now features a twin-cylinder **Armstrong Siddeley** engine and interior fit out, offering an excellent foundation for further restoration or sympathetic development.

She comes with a **valuable archive of documents, photos and crew stories**, making her an ideal project for traditional boat enthusiasts or anyone looking to preserve & enjoy an authentic piece of canal history.



THE ASHBY CANAL CENTRE, WILLOW PARK MARINA, STOKE GOLDING,  
NUNEATON, WARWICKSHIRE, CV13 6EU

CONTACT US FOR A VIEWING

## 01455 212636

[boatsales@ashbycanalcentre.co.uk](mailto:boatsales@ashbycanalcentre.co.uk)



# MALVERN SPECIFICATION

## GENERAL

- YEAR BUILT: **1928**
- SHELL: **HARRIS BROTHERS**
- CABIN CONVERSION: **1985**
- THICKNESS: **10mm Base with Footings**
- BERTH: **2**
- LENGTH: **70'**
- HEADROOM: **190cm in Centre**
- ENGINE: **ARMSTRONG SIDDLEY**
- Boat Safety: **EXPIRES DEC 2027**
- RCD: **NO**

## ELECTRICAL

- 12V Starter Battery
- 4 x 110Ah Leisure Batteries
- 2.5KW Generator (Stand Alone)
- Sterling Inverter
- ADSO Charger
- 2 x 100W Solar Panels
- Victron MPPT 75/115 Controller
- 240V Sockets
- 12V Sockets
- Wall and Ceiling Lighting

## HEATING

- Aldi Gas Boiler
- Morso Stove
- 4 x Radiators
- Polystyrene Insulation

## GALLEY

- Shoreline Fridge Freezer
- 4 x Gas Hob
- Microwave
- Base Units with Solid Worktops
- Wooden Flooring

## LIVING

- Morso Stove with Tiled Surround
- Corner Cabinet
- Sofa
- Freestanding Table
- Fitted Welsh Dresser
- Side Doors

## BEDROOM

- Double Bed
- Storage under Bed
- Shelving
- Reading Lights

## BATHROOM

- Compost Toilet
- Bath with Shower
- Sink with Cupboard Under

## WATER/GAS

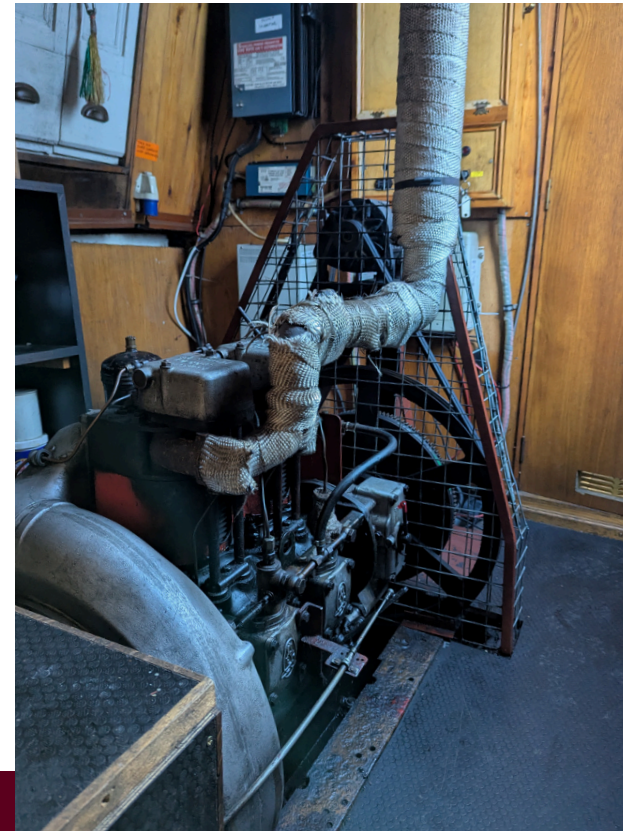
- 1 x 13KG in Locker w/ two spares
- Integral Water Tank

## BOATMANS CABIN

- Boatmans Cabin (missing side seating)
- Plywood Floor
- Epping Stove

## MAINTENANCE

- BSS Expires Dec 2027
- Hull Survey 2019
- Out of Water Observations - Nov 2023



These details are given in good faith but no guarantee is given or implied. Purchasers must satisfy themselves as to the condition and suitability of this vessel. We recommend that a qualified surveyor is employed. The Ashby Canal Centre are agents for this boat on behalf of the owner







